

**CHART 7  
AXIS MOTOR RUNAWAYS**

6-15-95

WHEN REPLACING MOTORS, CONNECT ALL WIRING AND VERIFY CORRECT OPERATION BEFORE INSTALLING MOTOR IN VMC. THIS WILL PREVENT DAMAGE TO MACHINE DUE TO RUNAWAYS.

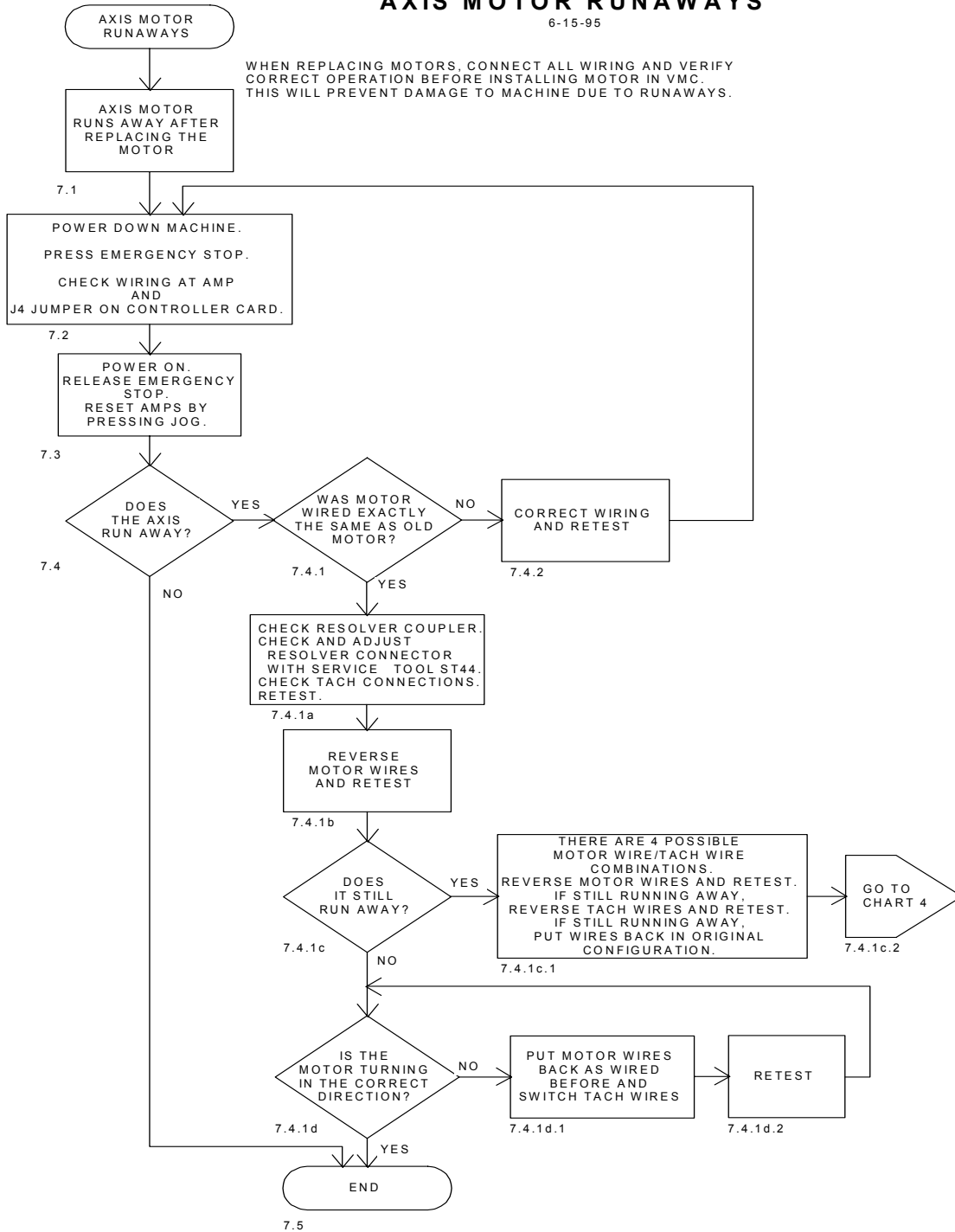


Figure 16-15 Axis Motor Runways