

**CHART 5
REPEATABILITY**
9-20-95

DIFFICULT TO DIAGNOSE PROBLEMS CAN OCCUR IF MACHINE IS NOT PROPERLY GROUNDED. THERE MUST BE A CONTINUOUS GROUNDING CONDUCTOR (AS SPECIFIED ON THE GROUNDING LABEL IN THE MACHINE'S DISCONNECT BOX) FROM THE VMC'S GROUND BUS TO THE GROUND BUS IN THE BUILDING'S POWER DISTRIBUTION PANEL.

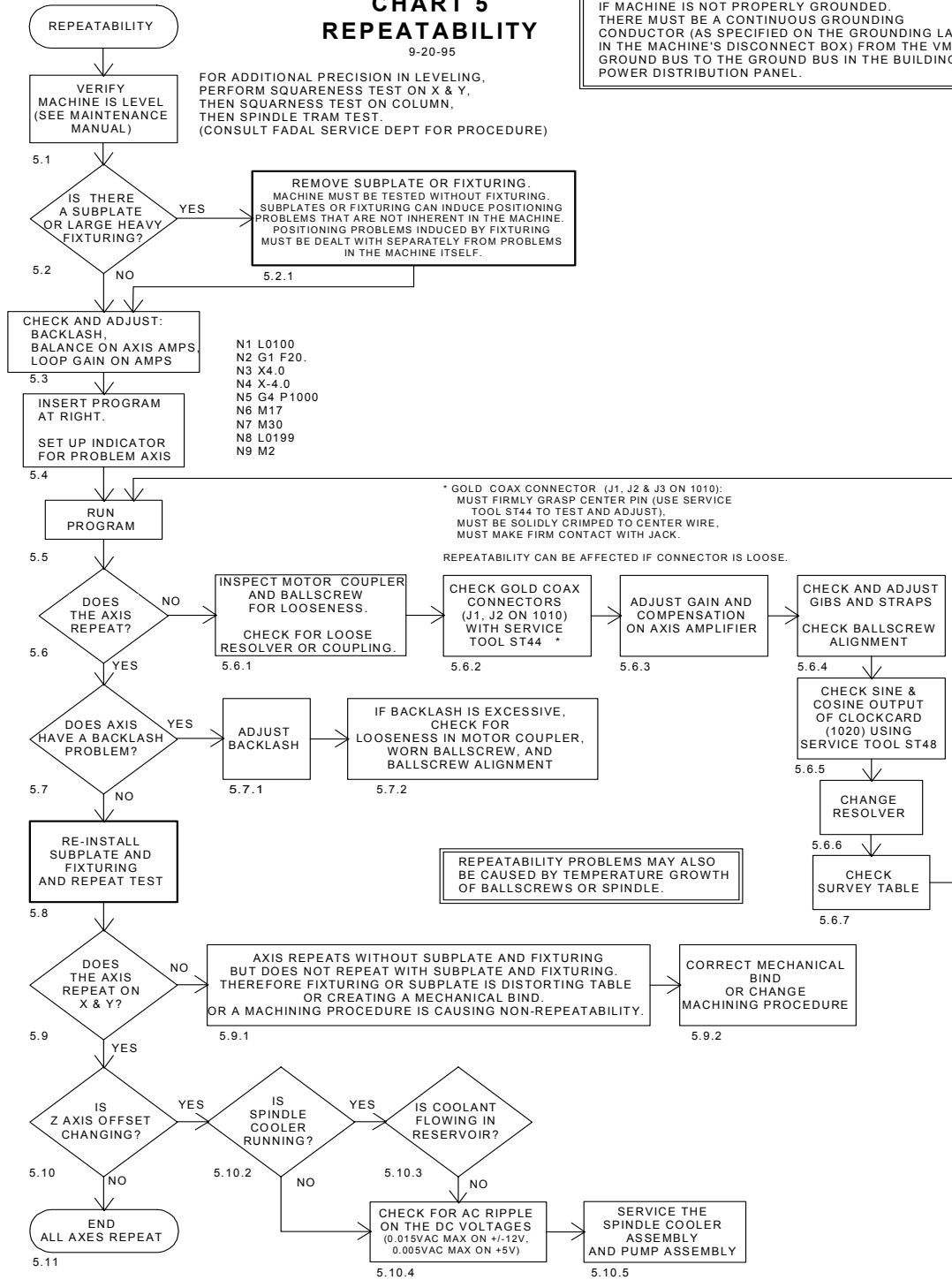


Figure 16-13 Repeatability