

### CHART 17 CIRCLE ROUNDNESS 10-3-95

DIFFICULT TO DIAGNOSE PROBLEMS CAN OCCUR IF MACHINE IS NOT PROPERLY GROUNDED. THERE MUST BE A CONTINUOUS GROUNDING CONDUCTOR (AS SPECIFIED ON THE GROUNDING LABEL IN THE MACHINE'S DISCONNECT BOX) FROM THE VMC'S GROUND BUS TO THE GROUND BUS IN THE BUILDING'S POWER DISTRIBUTION PANEL.

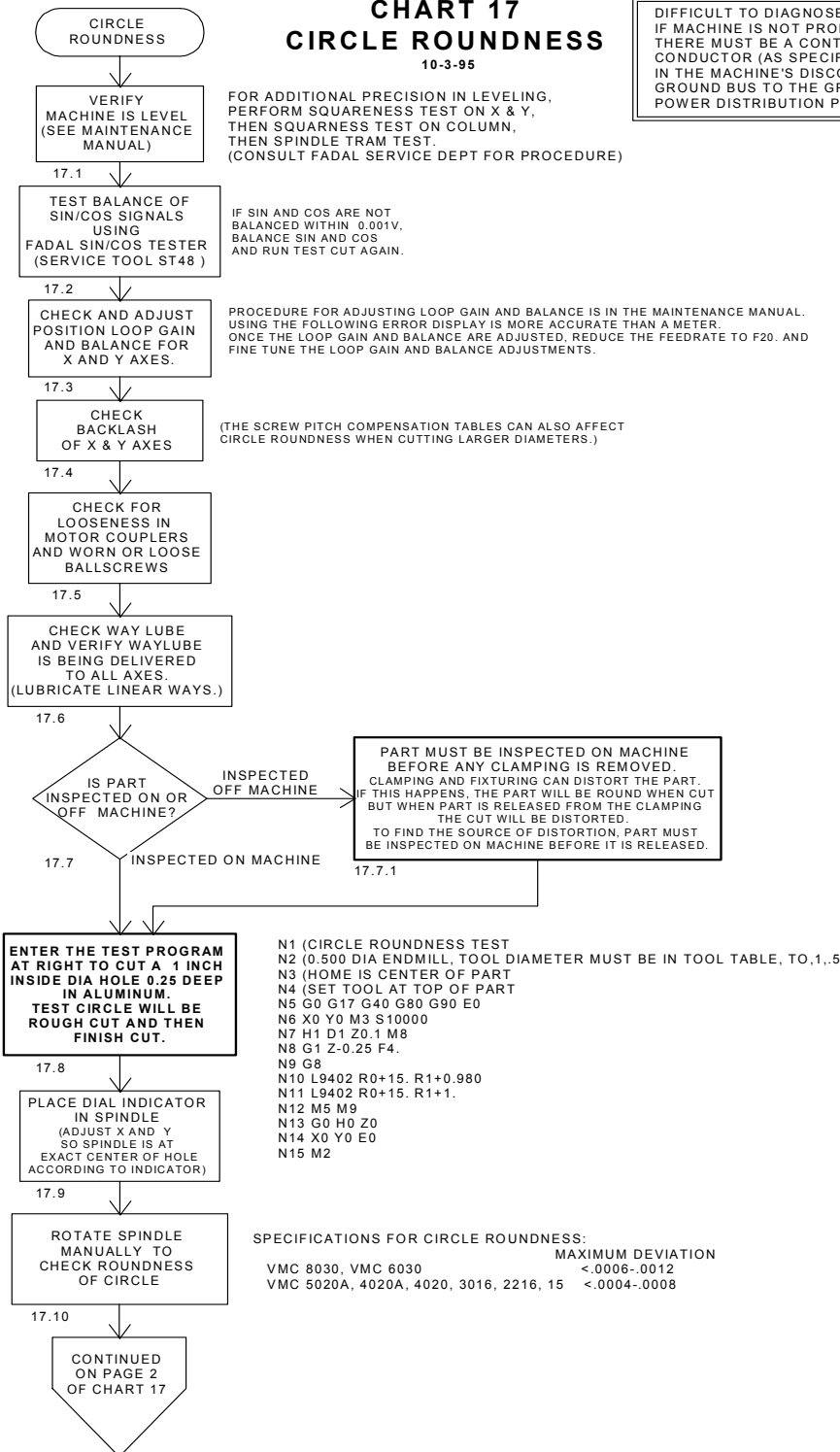


Figure 16-25 Circle Roundness

**CHART 17 continued (page 2)**  
**CIRCLE ROUNDNESS**

10-3-95

**NOTE 1:** IF A MEASUREMENT TEST FAILS, ALWAYS MEASURE AGAIN USING A DIFFERENT TOOL OR DIFFERENT MEASURING PROCEDURE. THE FAULT MIGHT BE IN THE MEASURING TOOL OR PROCEDURE INSTEAD OF THE MACHINE.

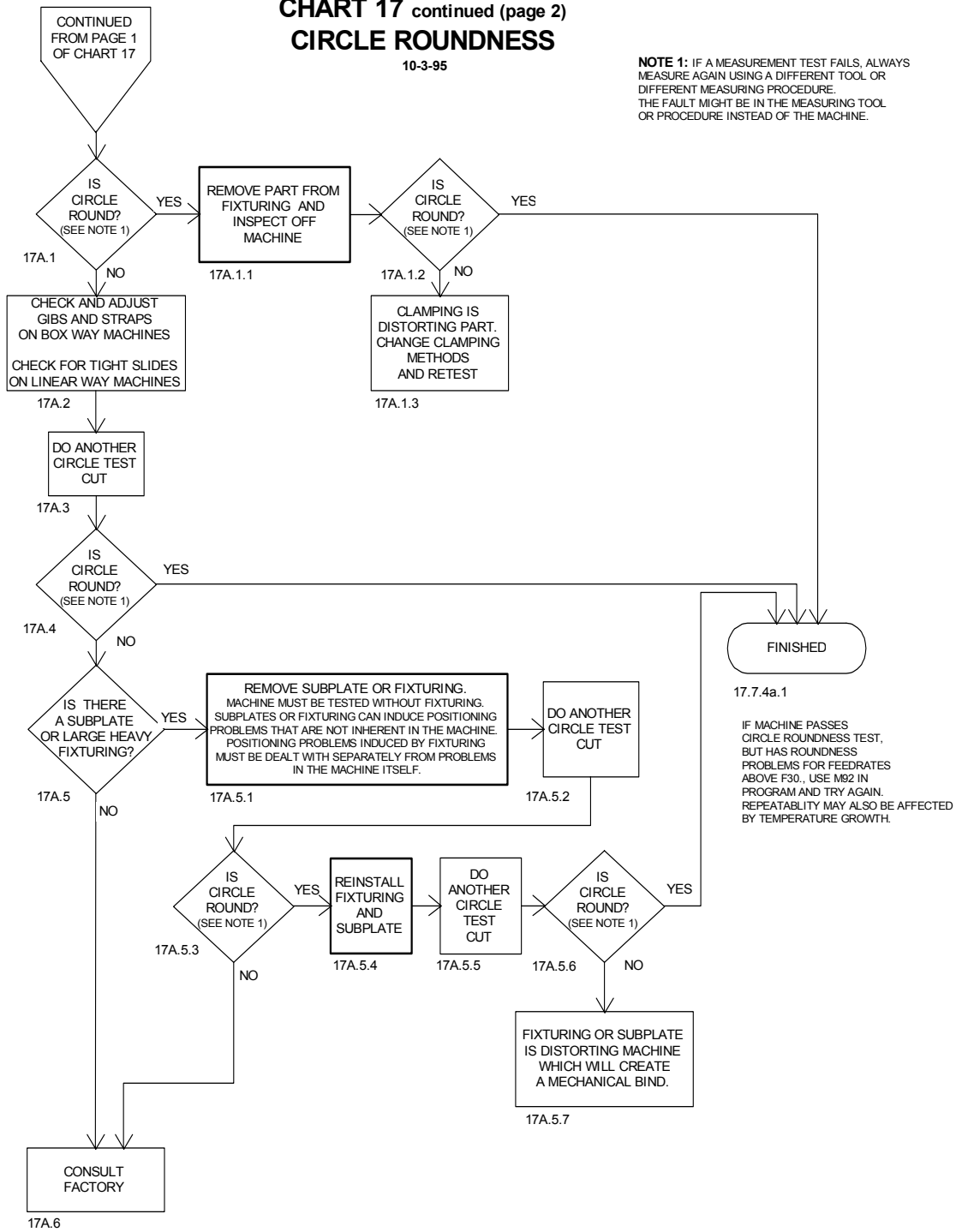


Figure 16-26 Circle Roundness (Continued)