

**CHART 13
ROTARY HEADS
A AXIS**
7-4-95

SOME HEADS HAVE TEMPERATURE SWITCHES INSTEAD OF (OR IN ADDITION TO) FUSES TO PROTECT THE MOTOR FROM OVERHEATING. THESE AUTOMATICALLY RESET WHEN THE MOTOR COOLS.

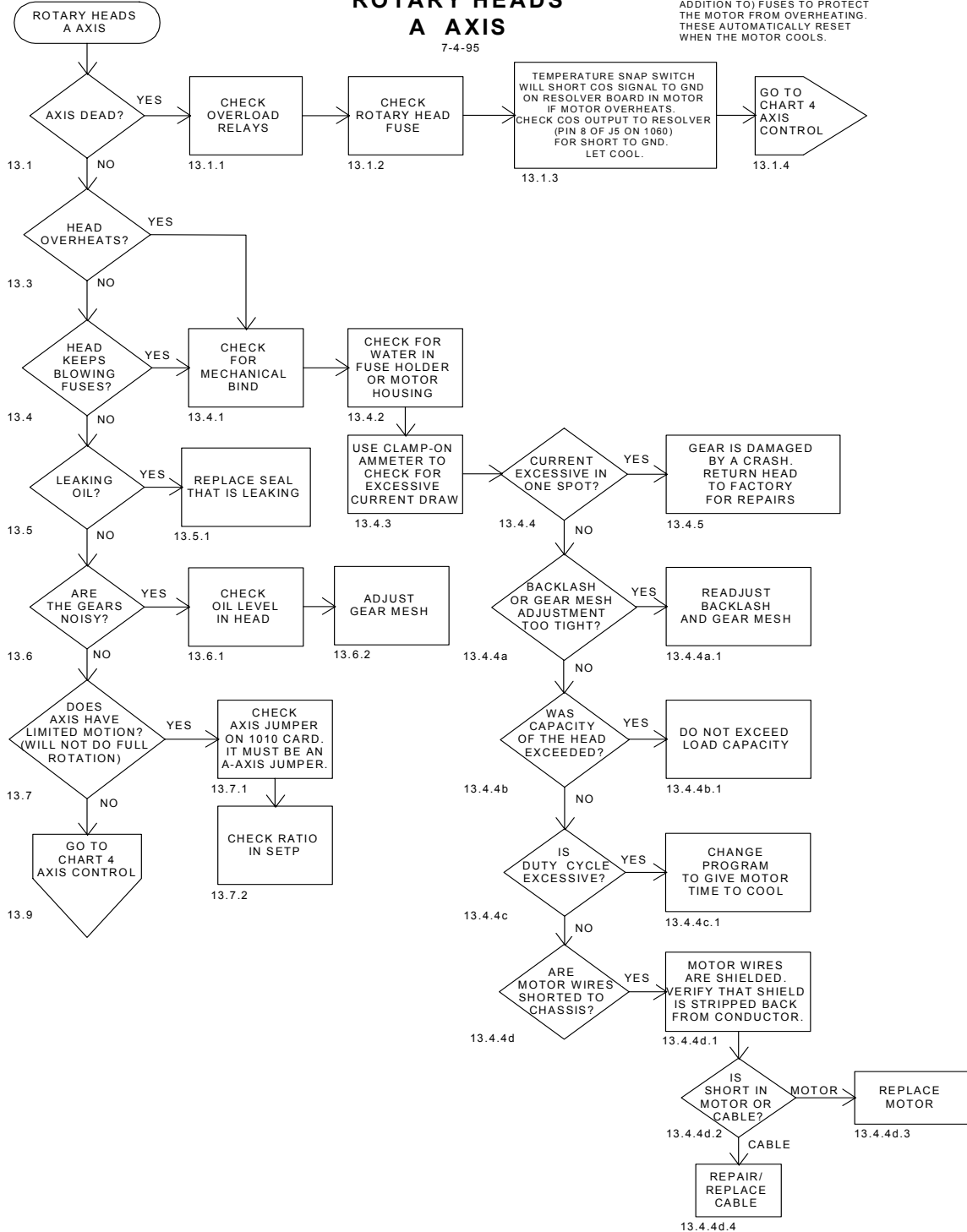


Figure 16-21 Rotary Heads A Axis